

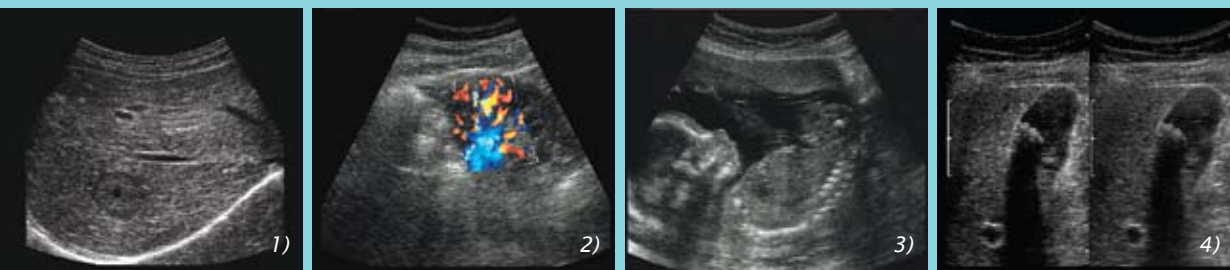


Comfort and quality in abdominal ultrasound

| 8820e |



- Comfortable ergonomic design
- Deep penetration and high resolution with coded excitation
- More diagnostic information with contrast imaging



- 1) Liver metastasis from ovarian cancer
- 2) Kidney with flow
- 3) Fetus 18 weeks
- 4) Gallbladder with stones in simultaneous harmonic imaging (left) and B mode

Broadband scanning and excellent image quality with a new, ergonomic design. The 8820e delivers the depth and sharpness you need for your ultrasound images.

■ Comfortable ergonomic design

Scanning the liver, pancreas, kidney and bladder has never been easier or more comfortable — for you and your patient. The slim design and rounded handle of the 8820e enables a lighter grip and a minimum amount of pressure. The smaller footprint makes even difficult areas easy to scan.

The ergonomically placed button on the handle makes it easy for the operator to start and stop scanning, freeze and unfreeze images and document images.

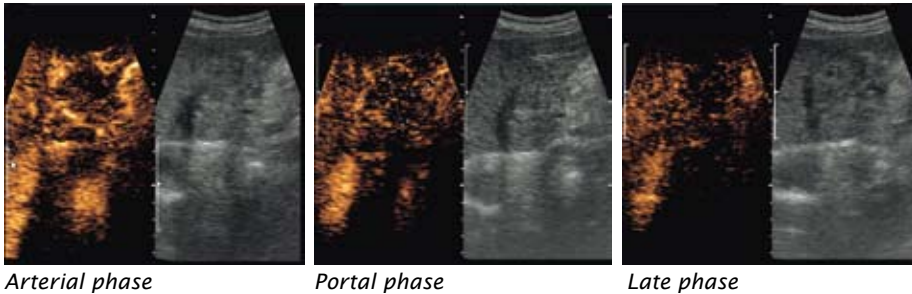
■ Deep penetration and high resolution

Coded excitation enables deep penetration at higher frequencies and high resolution, providing clearer visualization of deep anatomical structures. More patients can be scanned at 6MHz and even obese patients can be scanned at 2.5 MHz — for up to 26cm penetration — with the 8820e.

■ More diagnostic information

Contrast imaging with the 8820e provides important diagnostic information sometimes hidden using conventional ultrasound, including improved visualization and characterization of lesions.

Contrast imaging of liver lesions with Sonovue*



■ World Headquarters:

Mileparken 34 · DK-2730 · Herlev · Denmark
Tel: +45 44 52 81 00 · Fax: +45 44 52 81 99 · www.bkmed.com
A wholly owned subsidiary of Analogic Corporation

Specifications

Frequency range
2-6 MHz

Focal range
12-200 mm

Contact surface (acoustic)
62.5 x 13 mm

Disinfection
Immersion
Sterile covers are available

Physical data
Length: 104 mm
Width: 77 mm
Weight: 180 g



A single-use and a reusable puncture guide are available to help make intervention easier.

**Contrast imaging of the liver has not been approved by the FDA.*